



TelePatch™

Universal Pendant with Patient Cable

The Most Advanced & Convenient
Ambulatory Cardiac Monitoring System



Notice of Privacy Practices



To view ReactDx's Notice of Privacy Practices, Patient Rights and Responsibilities, and Assignment of Benefits/Patient Consent, please visit www.ReactDx.com/Notices.

If you would like a written copy, please call (877) 996-5553.

Guía en Español



ESPAÑOL

Encuentra Esta Guía en Español

ReactDx.com/es/GuiaTelePatchCable

Table of Contents

Welcome To TelePatch	2
TelePatch Monitoring Kit Contents	3
Preparing Your Skin.....	4
Applying Electrode Patches.....	4-5
Assemble Pendant and Cable Cradle.....	6
Starting Your Study	7
Lights and Sounds Guide	8
Replacing Electrodes	9
Battery Changing & Charging	10
Making a Symptom Recording.....	11
Connecting the Handset to Wi-Fi	12
Do's and Don'ts	13
Troubleshooting	14
End of Procedure Instructions.....	16
Returning the Monitor Kit.....	Back Cover

Welcome To TelePatch

The most advanced heart monitoring system

Your doctor has prescribed an ambulatory cardiac monitoring study using the ReactDx TelePatch Monitor.

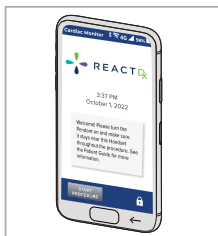
This guide will walk you through hooking up the monitor, using it during daily activities, recording symptoms when they occur, and returning the monitor at the end of the study. This study will monitor your heart's electrical activity and record any heart irregularities, called arrhythmias. Your doctor will review and interpret the results of this study.

ECG recordings are sent to ReactDx, where highly trained Certified Cardiac Technicians analyze your ECG data and create reports for your doctor. You should wear the monitor and go about your normal daily activities. If at any point you feel a symptom or irregular heartbeat, just press the Symptom button either on the Pendant or the Handset. It is a simple process and should not interfere with your daily activities.

Begin wearing your monitor immediately. Wear the monitor 24-hours a day for the length of your prescribed test. The instructions included in this Patient Guide will guide you on how to use the monitor. At the end of the study, take the device off and follow the instructions for promptly returning it.

If you have questions after reviewing this guide, please contact ReactDx at (877) 996-5553.

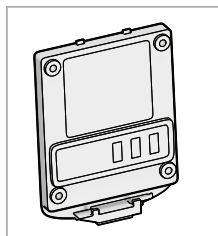
TelePatch Monitoring Kit Contents



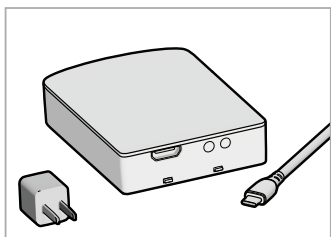
Handset



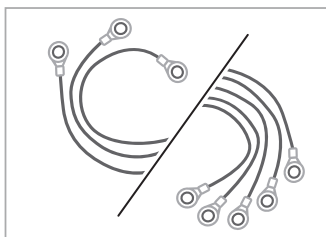
Universal Pendant



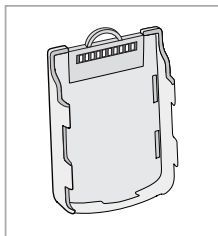
Battery(ies)



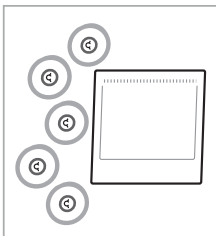
Battery Charger,
Charging Cable and Plug



Patient Cable, 3-Lead or 5-Lead



Cable Cradle



Packet of Electrodes



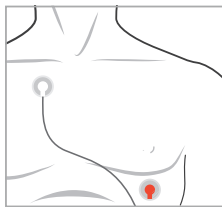
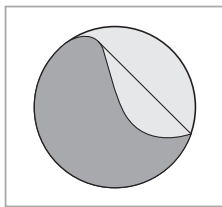
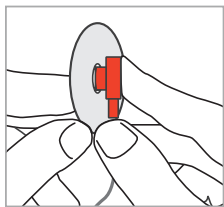
Lanyard

Preparing Your Skin

Using the illustrations on the right as a guide, choose areas of the chest that are flat and not very muscular. Avoid skin folds or creases, irritated skin and scars.

- ▶ **Wash with Plain Soap** (No Lotion/Oil) **Shave** (if needed) **and Dry**
- ▶ **Wipe Location with Skin Prep Pad**
- ▶ **Dry 60 Seconds**
- 

Applying Electrode Patches



- 1** Open a packet of Electrodes. Snap the Electrodes onto all the color terminals of the Patient Cable.
- 2** One by one, peel the backing from an electrode and apply it to your chest as shown in the illustrations on the right. Be mindful of where each color terminal should be placed.

! Change the electrode patches every two days. When re-applied, change their location slightly to lessen skin irritation.

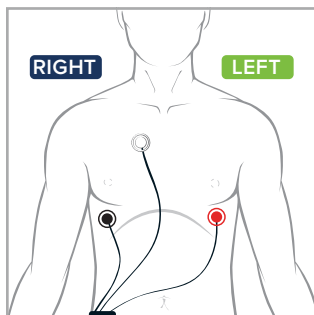
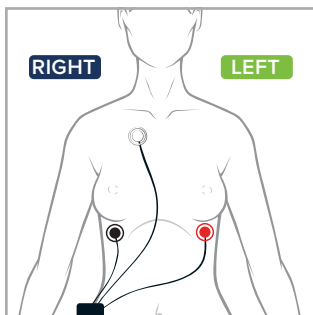
Applying Electrode Patches



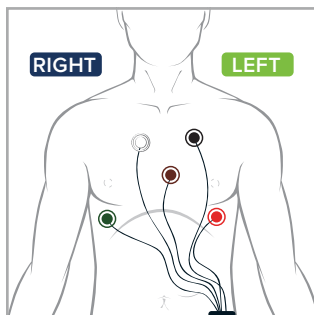
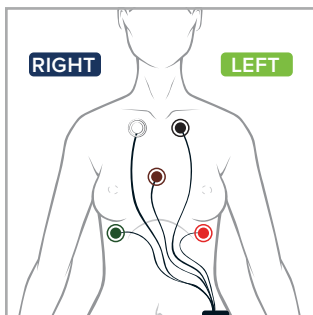
Remember, when looking in a mirror, your left and right sides will be reversed.



3-Lead Patient Cable

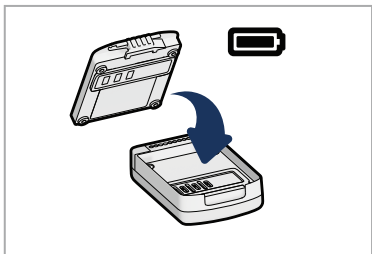


5-Lead Patient Cable



Tip. Remember, “White on Right” when applying Electrodes. This will help you remember to always place the white electrode on the upper right side of your chest.

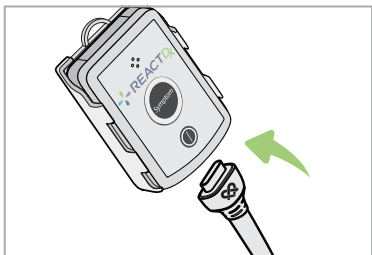
Assemble Pendant and Cable Cradle



- 1** Insert Battery. Slide the switch to the locked position.



- 2** Insert the assembled Pendant into the Cable Cradle until you hear a click.



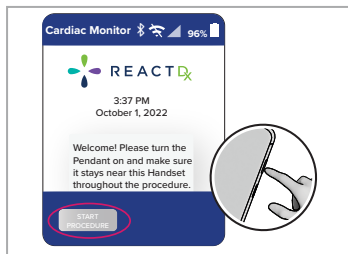
- 3** Insert the Patient Cable into the base of the Cable Cradle.



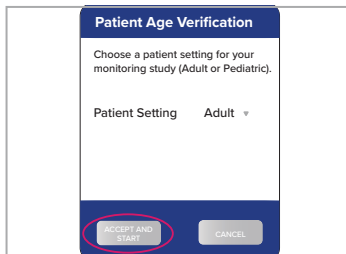
- 4** Confirm the Pendant is **ON**. A Green light flashes every four seconds when the Pendant is on. If the Pendant is off, press the **Power** button to turn it on.

- !** Take care not to insert the Pendant upside down in the Cable Cradle. The Cable Cradle may be worn on the included breakaway lanyard or kept in a pocket. Make sure the Patient cable stays firmly attached.

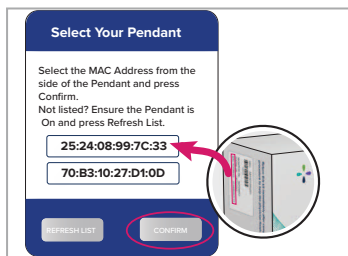
Starting Your Study



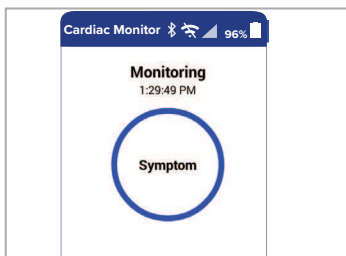
- 1 Turn on the Handset by pressing the **Power** key. Tap **START PROCEDURE**.



- 2 Select Adult or Pediatric for the patient setting. Tap **ACCEPT AND START**.



- 3 Select your Pendant's MAC address located on the sticker on the side of your box. Tap **CONFIRM**.



- 4 Your procedure is running when the **Symptom** button appears.

! Once the Handset is powered on and has connected to the Pendant, the Pendant light will slowly flash BLUE indicating the Pendant is monitoring and communicating to the Handset properly.

Lights and Sounds Guide

Power
ON.



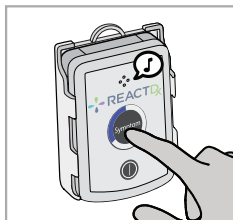
Power
OFF.



Monitoring
Good.



Symptom
PRESS.



Check
Pendant.



Change
Battery.



! **BLUE**
Flashing Light
Monitoring is good,
and communicating
with the Handset.

GREEN
Flashing Light
Monitoring is good
but not communicating
with the Handset.

ORANGE
Flashing Light
Change Battery.

Replacing Electrodes



Change the Electrodes every two days

▶ Be sure to **clean and prep** skin before applying new Electrodes.



▶ When re-applying, **change their locations** on your chest slightly to lessen skin irritation.

▶ **Review the placement diagram** (on page 5) for proper placement.

Sleeping

Place the Cable Cradle with Pendant beside you with the wires extended as much as possible so that you don't roll over the monitor,

OR

Wear a nightshirt with a breast pocket and place the monitor in the pocket.

! **DO NOT** wear the lanyard around your neck while sleeping.

Battery Changing & Charging

Flashing Light



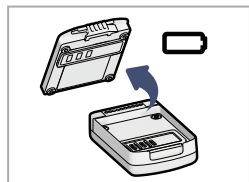
Charged Battery and monitoring.



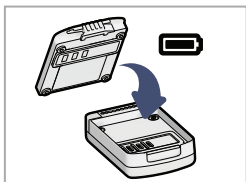
Low Battery.



1 Power **OFF**.



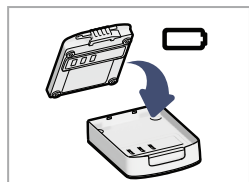
2 Remove Battery from Pendant.



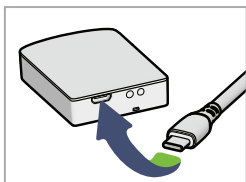
3 Add Battery to Pendant.



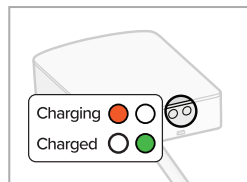
4 Insert and ensure Pendant is **ON**.



5 Add Battery to charger.



6 Connect cord to charger and electrical outlet.

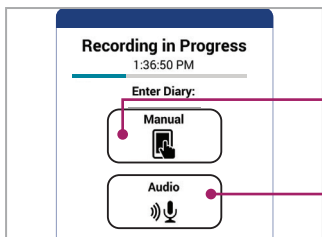


7 Check lights.

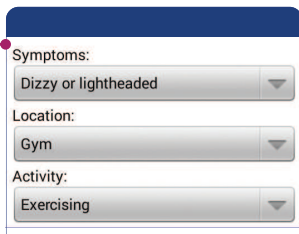
Making a Symptom Recording



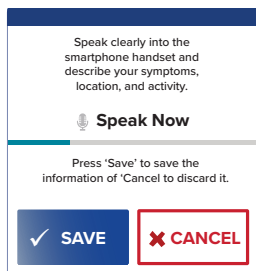
- 1 When you experience a symptom, press the **Symptom** button on Pendant or Handset.



- 2 Press **Manual** or **Audio** to record symptom details.



- Tap **Manual** and select your symptoms, location and activity from the three drop-down menus. Tap **SAVE** when finished.



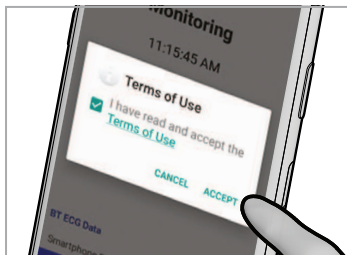
- Tap **Audio**. Speak clearly into the Handset microphone, describing your symptoms, location, and activity. Tap **DONE** when finished recording.

- ! **Remember:** When you experience a symptom, **press the Symptom button** on the **Pendant** or the **Handset** and record what you were feeling and doing.

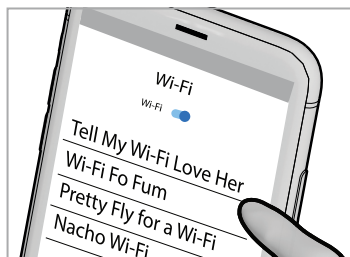
Connecting the Monitor to Wi-Fi



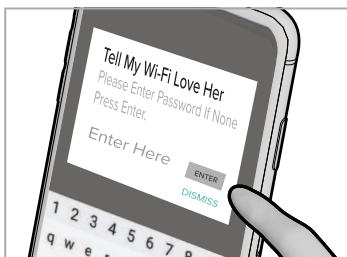
1 Tap the **Wi-Fi** symbol at the top of the Home Screen.



2 Read and **ACCEPT** the Terms of Use.



3 Select your network.



4 Enter your Wi-Fi password, press **ENTER**, and verify your connection.

! Your Heart Monitor will automatically connect to a cellular network, however, if you choose to connect your monitor to a Wi-Fi network, it will help ensure the data collected is quickly transmitted to our cardiac monitoring centers.

Do's and Don'ts



DO Change the electrodes every two days

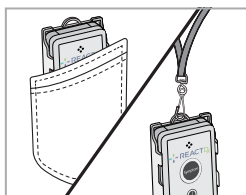


DO Wear Day and Night

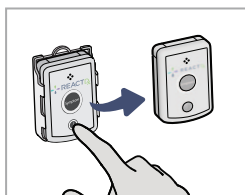
DO NOT shower, bathe, or swim with the Handset, Cable Cradle, Pendant, or Patient Cable, or get them wet in any other way.



Fully insert in Cradle.



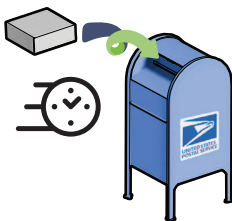
Wear Cable Cradle on lanyard or in a pocket.



Turn **OFF** before changing Battery.



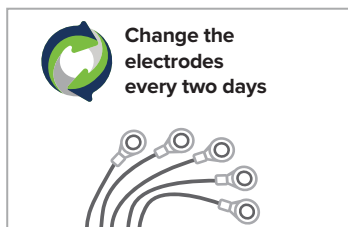
Keep near Handset.



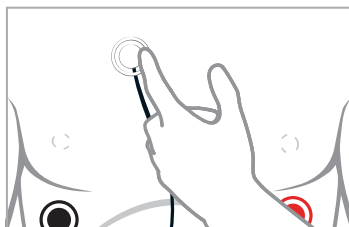
Return Promptly—leave kit for mail carrier to pick up in any USPS mailbox.

Troubleshooting

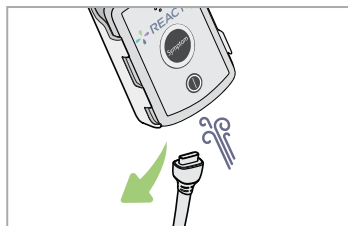
Text with a yellow caution icon on the Handset is an Action Message that requires your attention. Follow these simple instructions to return to full monitoring.



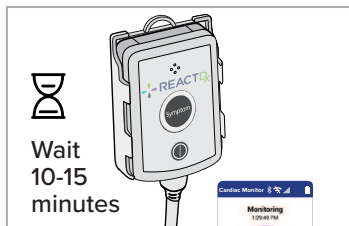
1 Change Electrodes.



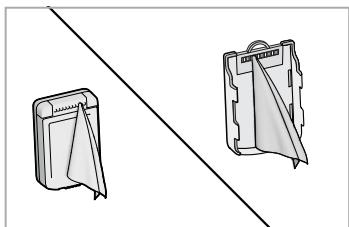
2 Ensure all Electrodes are secure and placement is correct.



3 Unplug cable from Cradle, blow into port.



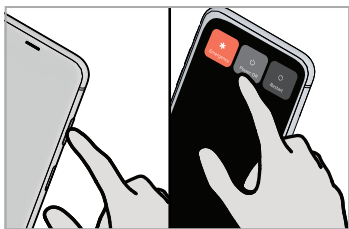
4 Reinsert and ensure the Handset has returned to Monitoring.



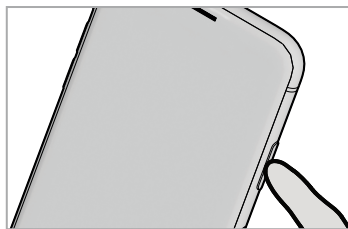
- 5** Wipe inside of Cradle and outside of Pendant with alcohol wipe.



- 6** Reinsert and ensure the Handset has returned to Monitoring.



- 7** Press and Hold Power button on side of Handset. Tap Power **OFF**.



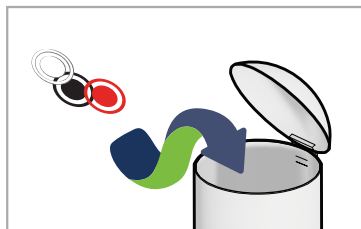
- 8** Turn **ON** Handset.

- !** If you are unable to resolve an issue or if you need assistance with other error messages, **call ReactDx at (877) 996-5553 or chat with us online at www.ReactDx.com.**

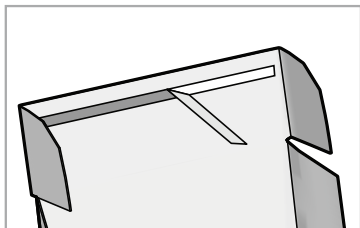
End of Procedure Instructions



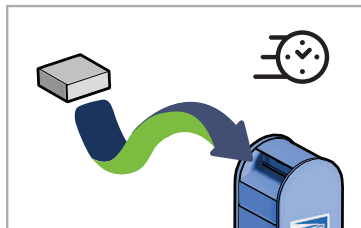
1 Remove Pendant from Cradle.



2 Remove and discard Electrodes.



3 Insert all contents / unused supplies back into the box.
Close and seal the box.

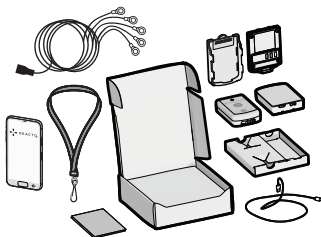


4 Promptly leave for mail carrier in any USPS mailbox.

Remember to return the Kit immediately after the procedure is complete to help your physician finish your test. Unreturned devices may result in a bill of up to \$2000 to replace the device.

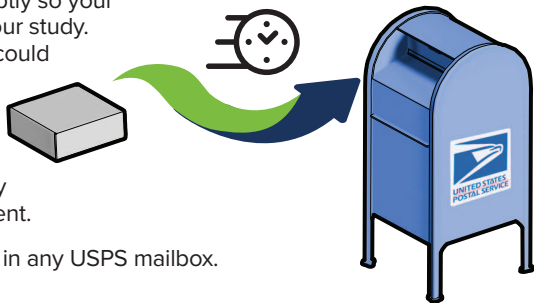
Kit Packing List:

- Universal Pendant
- Handset
- Batteries
- Cable Cradle
- 3 or 5 lead Cable
- Battery Charger
- Charging Cable & Plug
- Unused Electrodes
- Lanyard



Returning the Monitor Kit

Return your Kit promptly so your doctor can finalize your study. Unreturned devices could slow delivery to your doctor, result in a bill for the unreturned equipment, and delay helping the next patient.



Leave for mail carrier in any USPS mailbox.



Please take a moment to fill out our patient survey at www.ReactDx.com/survey. Your input will help us provide patients, like yourself, the best possible experience.



Medicomp, Inc.
dba ReactDx has earned
the Joint Commission's
Gold Seal of Approval .



(877) 996-5553 • www.ReactDx.com • Info@ReactDx.com

©2024 Medicomp, Inc. dba ReactDx

QSGR000720-01